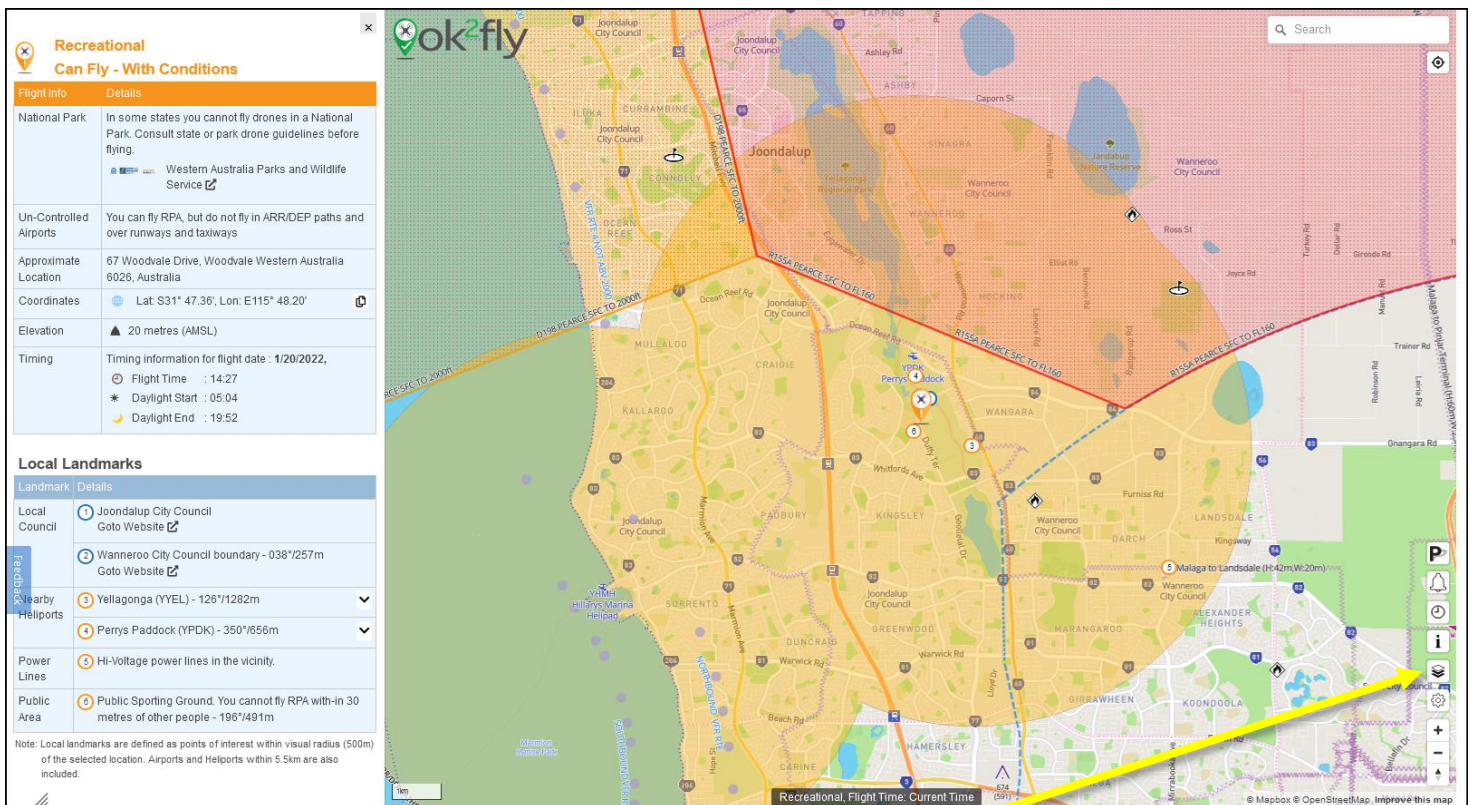


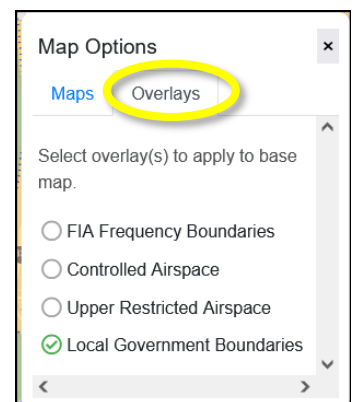
# NEPG Drone Guide Appendix - Location Location!

Regulations on what you can and can't do with your drone depend very much on where you are. There are basically two types of regulations: 1) those related to CASA's rules, to do with airports, aerodromes, helipads, etc; and 2) to do with regulations set for individual Local Govt Areas, National and Regional Parks, Reserves etc etc.

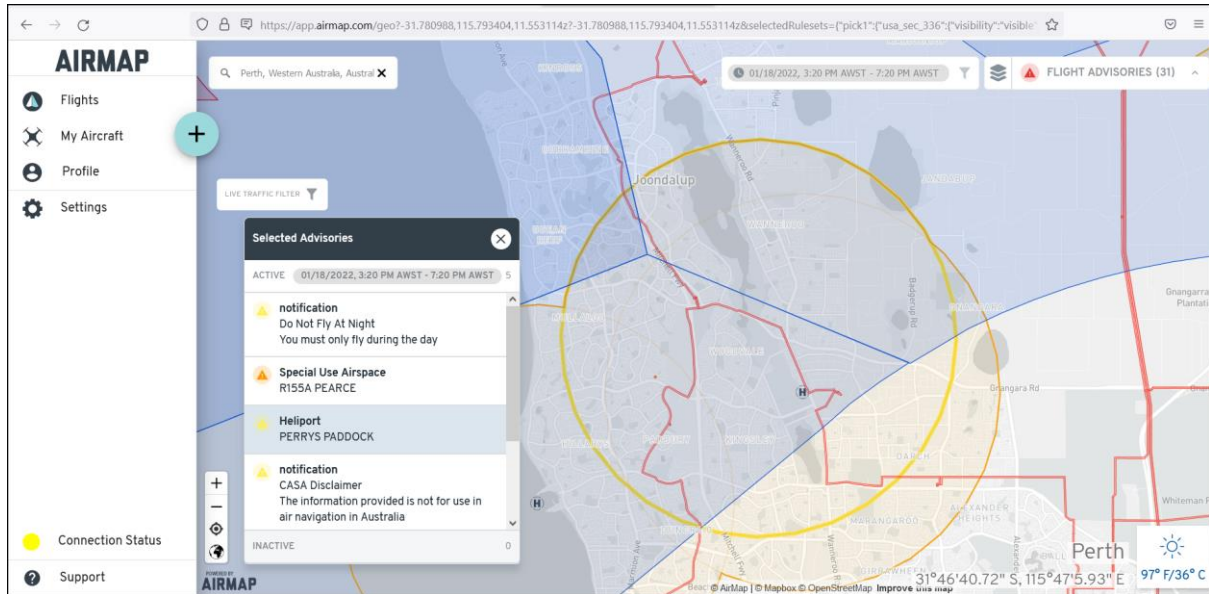
The CASA rules ([www.casa.gov.au/knowyourdrone/drone-rules](http://www.casa.gov.au/knowyourdrone/drone-rules)) are summarised in the NEPG Drone Guide, and are visualised in a number of CASA-approved apps ([www.casa.gov.au/knowyourdrone/drone-safety-apps](http://www.casa.gov.au/knowyourdrone/drone-safety-apps)). See below for a couple of examples. Get some advice from your experienced fellow droneers which one works best.



- If you click on **Change Map Layer**, you will be able to change to the **Satellite** image (under **Maps**), or under **Overlays**, you can add a layer for the **Local Government Boundaries**.
- Click anywhere on the map, and the left-hand panel shows you all kind of relevant drone info.



Another example:



The remainder of this guide lists and explains some of the online resources you can use to find out who controls the land (or water) where you want to fly your drone. Once you know, you can usually find some specific drone information on the websites of the relevant authorities. See the NEPG-Drone-Guide\_27082021.pdf for more info and some examples of the different rules of local councils.

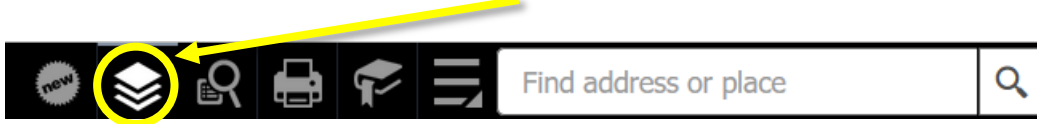
There are two main location tools available on the web:

- WA Gov - My Council
  - <https://mycouncil.wa.gov.au/#map>
  - Boundaries of Local Government Areas for whole of WA;
  - Simple to use, but limited in scope. Moving the mouse highlights the different council areas; clicking once shows the name of Local Government Area, VIEW will show more info, including contact details.
  
- Landgate – SLIP – Locate V5
  - <https://maps.slip.wa.gov.au/landgate/locate/>
  - Very extensive Geographic Information System (GIS) with a lot of different layers!
  - You can use it to find locations of e.g. Local Council areas, Regional Parks, National Parks, Marine and Harbour Act Areas, each of which may have different rules about flying your drone.

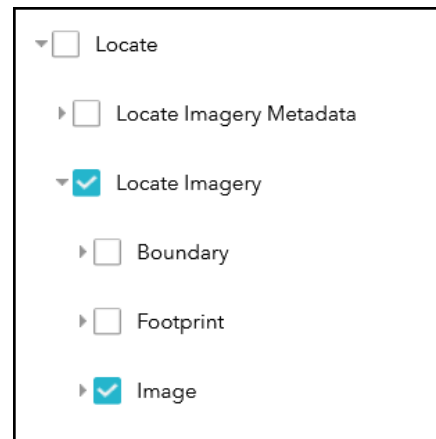
# NEPG Drone Guide Appendix - Location Location!

A short Intro to Locate V5:

- After Locate opens, click on **Layer List**;

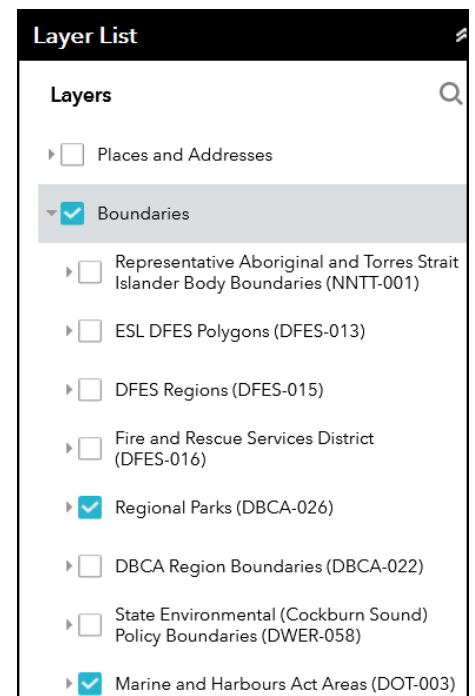


- Most Layers have sub-layers (or sub-sub-), that can be shown by clicking on the little arrow in front of the tick-box, and be switched on or off by ticking the tick-box;
- By default, a satellite image is shown. To switch that off, go to the bottom of the **Layer List**, and switch off **Locate**;



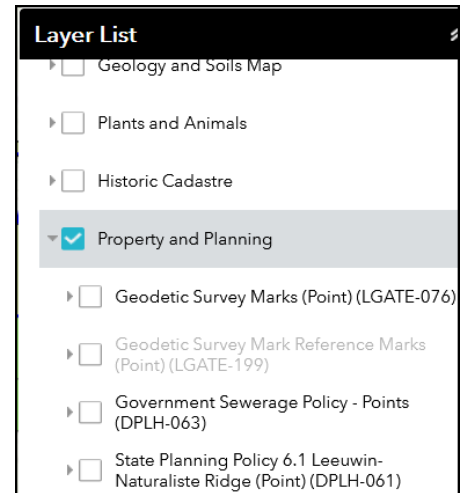
- The main other Layers useful for flying drones are:

- **Boundaries**
  - Regional Parks (DBCA-026)
  - Marine and Harbour Act Areas (DOT-003)
  - Local Govt Auth (LGA) Boundaries (LGATE-233)
  - Townsites (LGATE-248)
  - Localities (LGATE-234)

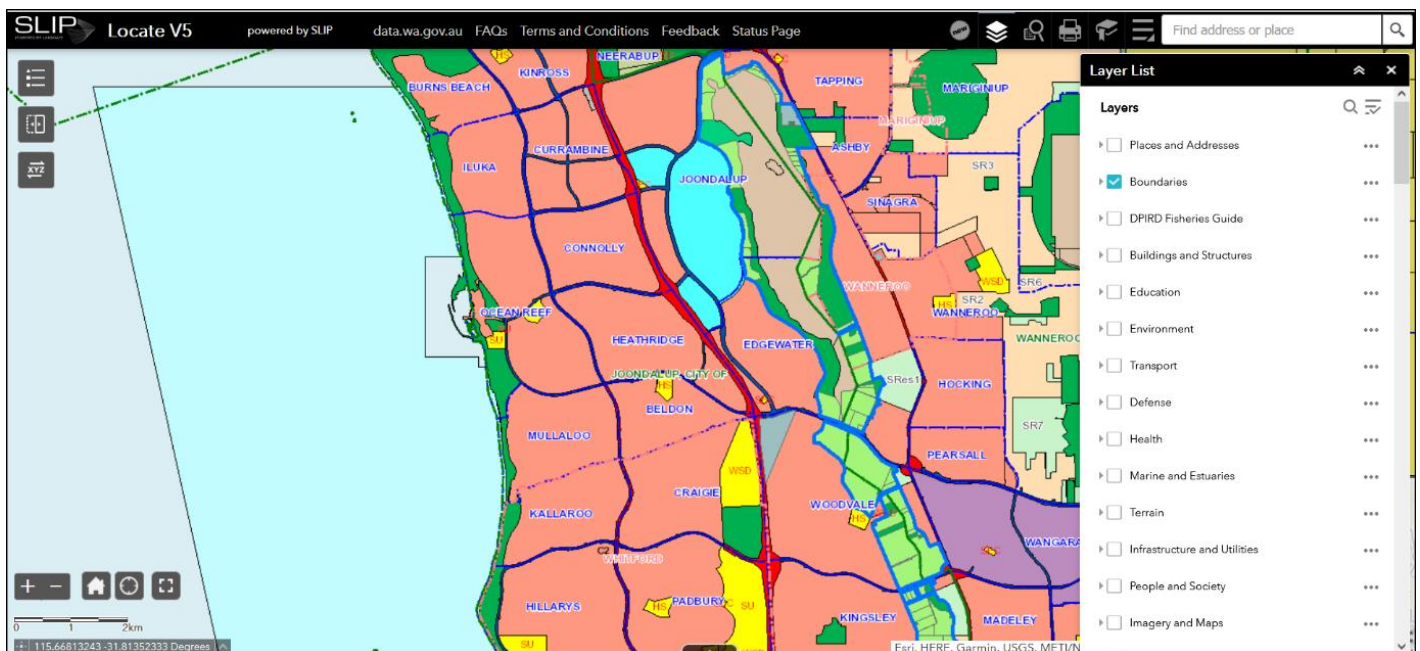


# NEPG Drone Guide Appendix - Location Location!

- **Property and Planning**
  - DBCA – Legislated Lands and Waters (DBCA-011) (incl Nat Pks)
  - **Region Schemes**
    - Region Schemes – Zones and Reserves (DPLH-023)
  - Local Planning Scheme – Zones and Reserves (DPLH-071)

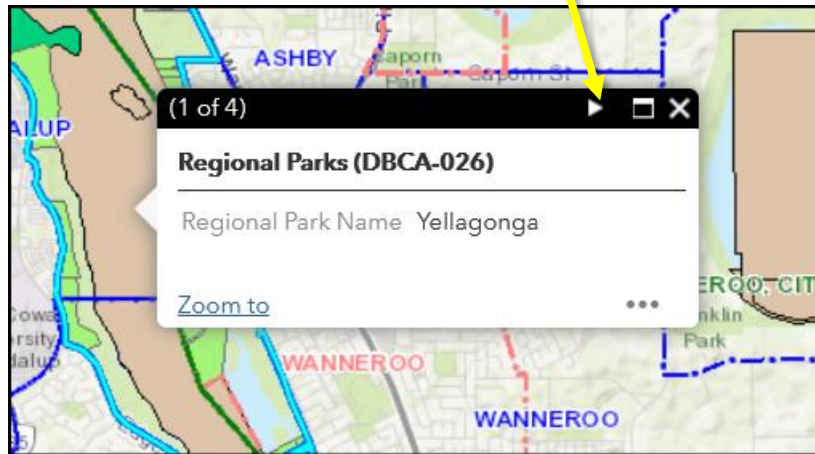


- You may want to switch off any other default layers that are not relevant to your purpose;
- A multitude of boundaries and shapes with different colours will appear on your map. Move to the area of interest, and, from the list above, switch on/off those layers that are most useful to you.

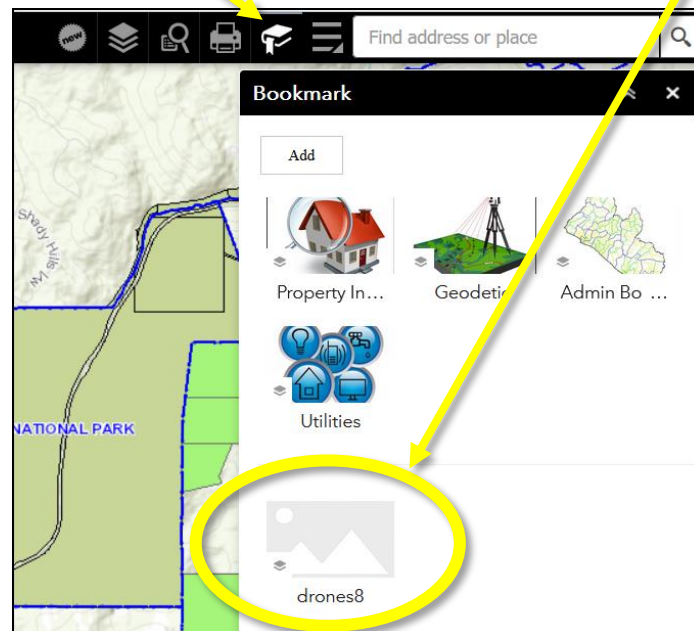


## NEPG Drone Guide Appendix - Location Location!

- If you single-click on an area, a window will appear, with information of the first layer in that area. To see info on the other layers, click on the arrow on the top bar of the window.



- If you've selected a number of layers, and want to preserve those settings, you can click on **Bookmark**, and then **Add**: a new little icon appears, which you can name as required. The next time you open **Locate**, you can go straight to **Bookmark**, and select the one you have created.



- Please note that none of these Layers will tell you anything about drones! You'll have to do your own homework on which rules apply to which area. Your fellow droners will be able to assist, and see also the NEPG Drone Guide.