

Intentional Camera Movement Technique

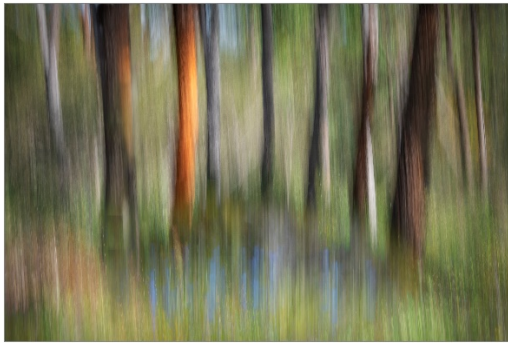
- Recommend setting camera to shutter priority. If you are comfortable with your camera, can set to aperture priority.
- A shutter speed of 1/15 to 1/10 of a second is a good starting point, which typically means low ISO, say 100, small fstop, say F16-20.
- If having difficulty getting sufficiently long shutter speed, then use a Neutral density filter. Circular filter is fine.
- Potential Movement
 - *Panning*: vertically or horizontally. Start panning before you envisage the image starting. Useful for blurring backgrounds and gives impression of movement. Often applied to trees. Speed determines how much detail is captured.
 - *Circular*: hold the camera in front like a steering wheel and move the camera over a rolling motion to one side.
 - *Jiggle*: Hold the camera as normal and make a very slight shaking movement. It only needs to be a tiny movement, similar to shivering.
 - *Swoosh*: Similar to a tick movement. Produces small v shapes. Shorter exposure, say 1/20 or 1/25 gives better results.
 - *Move with the flow*: similar to panning, but you allow the camera to flow the shape of what you are capturing.
 - *Hand held*: just as it says, hold camera for a long shutter speed. Gives an out of focus look.
 - *Out of focus*: enhance painterly effect by starting with lens slightly out of focus.
- Outcome can be very random
- Often result is as much influenced by good fortune and happy accident as by skill and experience
- Recommended youtube videos:

<https://www.google.com/search?q=how+to+do+icm+photography&oq=how+to+do+icm+&aqs=chrome.0.0i512j69i57j0i512j0i22i30l4j0i390i650l3.421715438j0j15&sourceid=chrome&ie=UTF-8#fpstate=ive&vld=cid:6af4be57,vid:FfKLo4jIAIY>

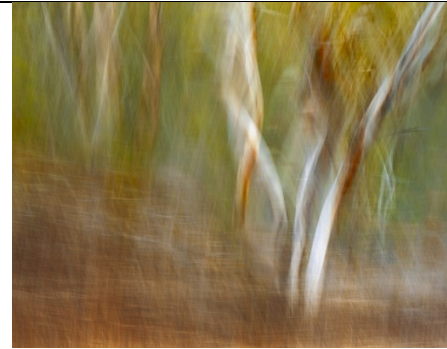
<https://www.google.com/search?q=how+to+do+icm+photography&oq=how+to+do+icm+&aqs=chrome.0.0i512j69i57j0i512j0i22i30l4j0i390i650l3.421715438j0j15&sourceid=chrome&ie=UTF-8#fpstate=ive&vld=cid:91b38f2a,vid:2IHTbPx-0pA>

https://www.google.com/search?sxsrf=APwXEdcGRJUzvyvhMmVGd2_IzLtGULG42g:1687478996282&q=Advanced+ICM+techniques&sa=X&ved=2ahUKewjap46Rjdj_AhUKd2wGHbxLCakQ1QJ6BAgfEAE&biw=1280&bih=664&dpr=2#fpstate=ive&vld=cid:04b4f5d3,vid:mvnVsw4_NMo

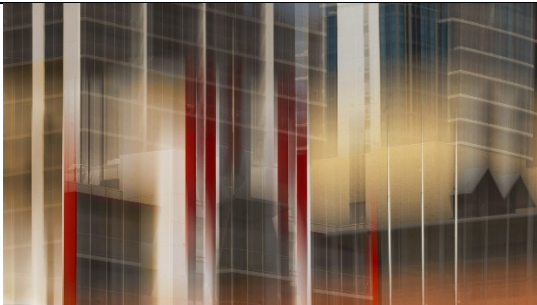
Examples



Vertical panning



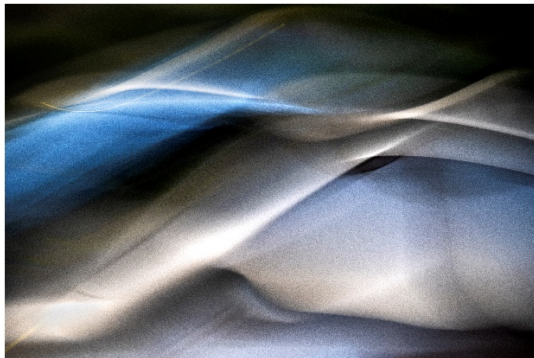
Follow the subject's lines



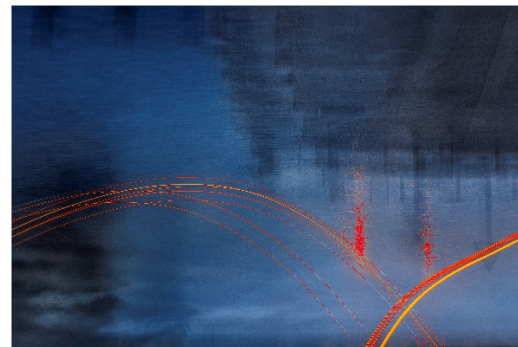
Vertical Panning



Diagonal Movement



Follow the curves with twist



Rotation